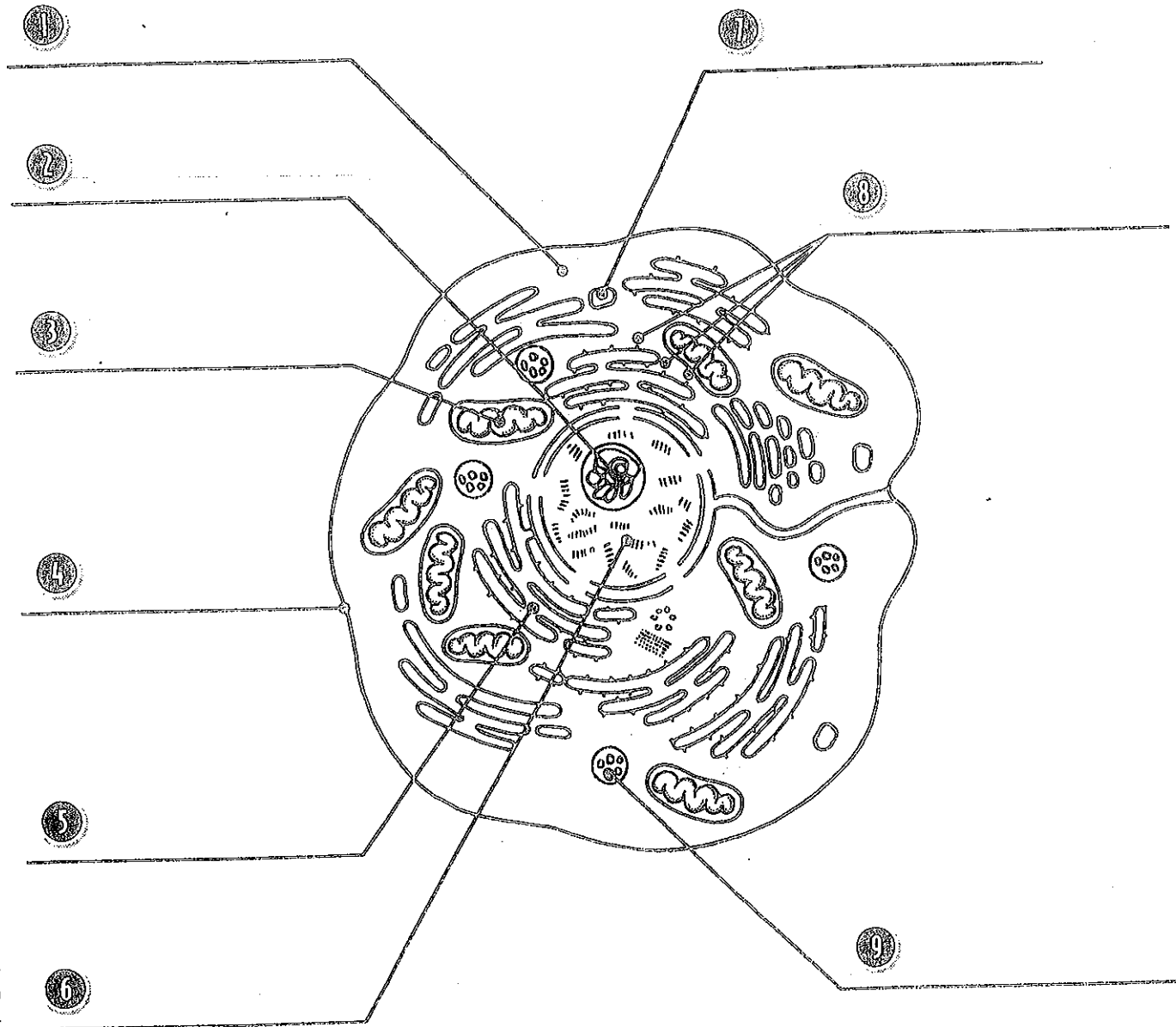


A Typical Animal Cell

While the cells found in various tissues of animals are unique and specialized, the basic structure of animal cells is the same. Animal cells lack the rigid cell wall found in plant cells. Use the terms in the word box to label the diagram.

cytoplasm	nucleolus	lysosome
cell membrane	nucleus	ribosomes
endoplasmic reticulum	mitochondrion	vacuole



Functions within an Animal Cell

The parts within a cell are called organelles. Each organelle has a unique function that it serves for the cell. Match each term in the word box to its definition.

cytoplasm
cell membrane
mitochondria

nucleolus
nucleus
vacuole

lysosome
endoplasmic reticulum

1

_____ Located in the nucleus, this organelle is made up of RNA and protein.

2

_____ These structures are passageways from the nucleus that transport proteins through the cell.

3

_____ This organelle is the control center of the cell. It contains chromosomes and DNA.

4

_____ This substance contains all the living material in the cell.

5

_____ These organelles break down glucose to supply the cell with energy.

6

_____ This small round organelle is involved in digestion.

7

_____ This expanding and contracting organelle stores water, nutrients, and wastes.

8

_____ This enclosing structure holds the cell together and controls what moves into and out of the cell.