

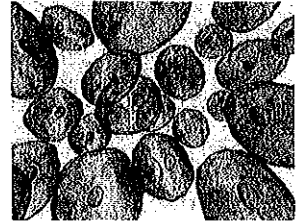


Plant vs. Animal Cells - Lab

Name _____ Date _____ Hour _____

Purpose:

1. Use microscope to view plant and animal cells.
2. Identify the 3 main parts of each cell.
3. Compare plant and animal cells – similarities and differences.

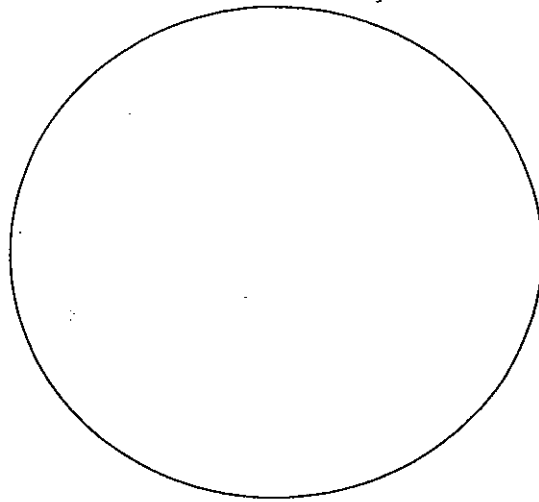
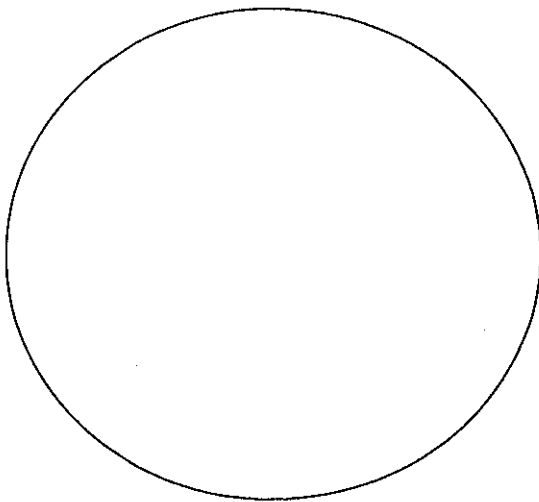


Materials: onion piece stain toothpick
forceps microscope water
2 Microscope slides 2 Coverslips pipet

Procedure:

1. Prepare a slide with **onion cells**. Your teacher will explain the process.
2. View the slide under high power and record your observations.
3. On each drawing, label the cell structures that you were able to see (the 3 main parts of the cell).
4. Prepare a slide with **your cheek cells**. Your teacher will explain the process.
5. View the slide under high power and record your observations.
6. On each drawing, label the cell structures that you were able to see (the 3 main parts of the cell).

Data/Observations:



Alike But Different

Name _____ Date _____ Hour _____

Plant Cell

Animal Cell

What We Have In Common

What Makes Us Unique

In 2-3 sentences, summarize the similarities and differences of plant and animal cells.